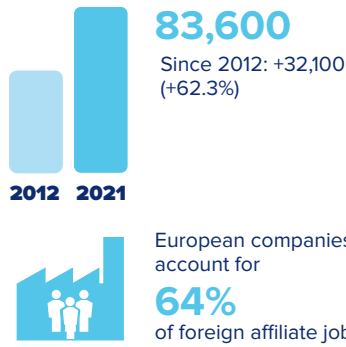




## Wisconsin and Europe



### Employment within Wisconsin, 2021

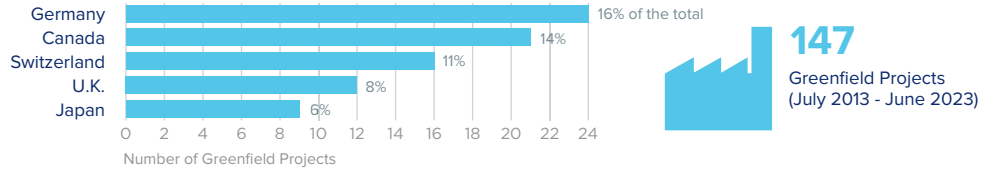
Country	Employment
United Kingdom	22,100
Canada	17,600
Germany	14,900
France	10,600
Japan	8,900

On a country basis, U.K. companies operating in Wisconsin represented 17% of total foreign affiliate employment in Wisconsin, with U.K. multinationals supporting approximately 10,400 more jobs in 2021 than in 2012.

Jobs directly supported by European investment. Total European-related jobs are likely to be higher, because these figures do not include jobs created by trade flows, indirect employment effects through distributors or suppliers, or via non-equity arrangements such as strategic alliances, joint ventures, or other deals.



### Sources of Greenfield Foreign Direct Investment (FDI)



Number of projects does not directly translate to value of projects or jobs added. Greenfield FDI is investment in new assets. Greenfield projects listed on the right hand side are Greenfield projects in the state from all countries.



### Wisconsin Goods Exports to Europe, 2022

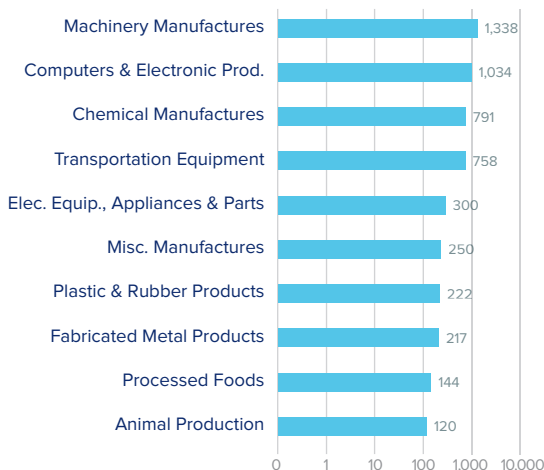
**\$5.6 bn**

Machinery and chemicals are the state's top exports to Europe, making up a combined 42% of total exports.

#### Top European Export Markets, 2022

Country	Exports (\$ millions)
Germany	1,044
United Kingdom	881
Belgium	668
Netherlands	563
France	492

#### Top Ten Exports to Europe, 2022 (\$ millions)



### Wisconsin Goods Imports from Europe, 2022

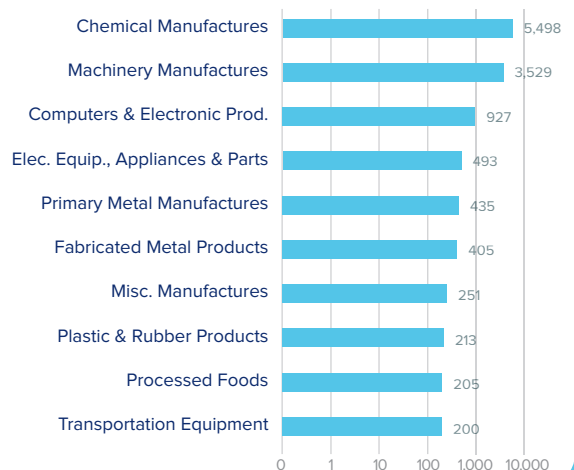
**\$13.0 bn**

Chemicals and machinery accounted for 42% and 27% of total imports from Europe, respectively.

#### Top European Import Markets, 2022

Country	Imports (\$ millions)
Germany	2,650
Ireland	2,519
Belgium	2,060
Italy	1,348
United Kingdom	715

#### Top Ten Imports from Europe, 2022 (\$ millions)



Sources: Bureau of Economic Analysis; U.S. Census Bureau; U.S. Department of Commerce; SelectUSA.